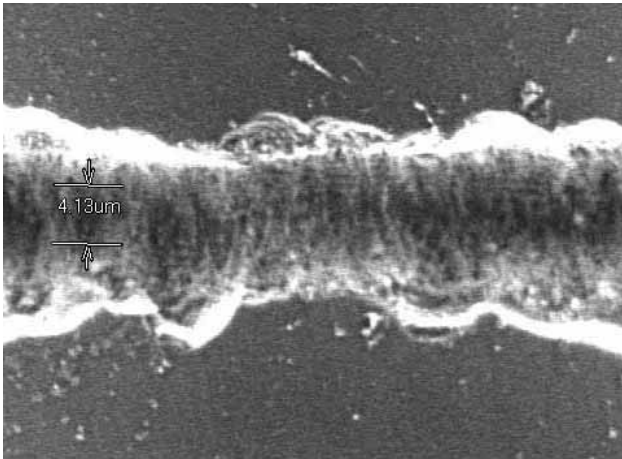
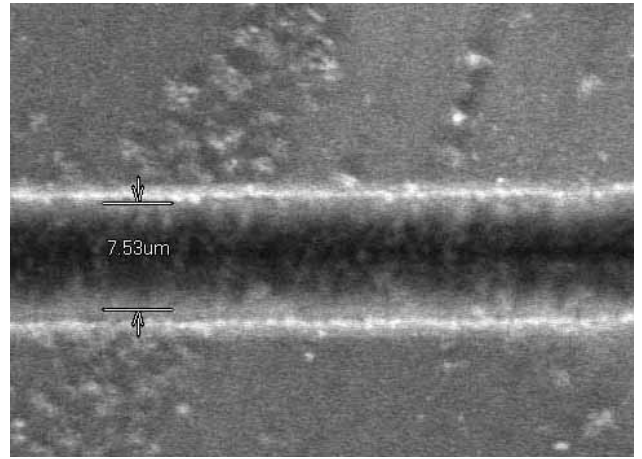


Some results achieved when using a Focal- π Shaper

Scribing by TEM₀₀ femtosecond Laser (Courtesy of Altechna, Lithuania)



Focusing by an ordinary lens,
without Beam Shaping



a Focal- π Shaper installed in front of
a focusing lens

Heating by Fiber Laser (Courtesy of CARS, University of Chicago, USA)

Comparison of heating of tungsten foil by:

- a TEM₀₁ beam focused by a lens (left column),
- a TEM₀₀ beam focused by a lens with a Focal- π Shaper installed ahead, (right columns).

Power is stepwise increased in top-down direction.

Brightness of a dot corresponds to temperature.

One can see variation of effective beam diameter in case of non-shaped TEM₀₁ beam (by the way with a TEM₀₀ beam the diameter variation would be greater) and almost constant beam diameter with only variation of temperature (brightness) in case of TEM₀₀ beam with a Focal- π Shaper.

